

- Extra reinforced steel cast body through the heat treatment and industrial design.
- Light and robust design.
- 100% Holding negative-acting hydraulic brake system.
- Standard pressure roller and roller fairlead.
- Easy assembly, high rope capacity and high torque hydromotor.
- Standard manual rope unloading system.
- EN 14492-1 : 2006 Power Driven winches supported
- CE Machinery Directive 2006/42/EC

Specifications

Max. pulling capacity (kg / lbs)	: 12.600 kg (27773 lbs)
Max. rope length (m / ft)	: 53 m (173 ft)
Max. rope length EN (m / ft)	: 37 m (121 ft)
Recommended wire rope (mm / in)	: 18 mm (7/10 ") 2160 Mpa
Hydromotor (cc / in³)	: 200 cc (12 in³)
Max. pump flow (L / min - gal / min)	: 60 L/min (15.8 g/min)
Gear ratio:	: 28 : 1
Oil types and capacity	: 85W 90 - 2 L
Max. working pressure (bar / psi)	: 175 bar (2537 psi)

Rope Winding Layer	Pulling Capacity kg / lbs	Rope Speed m / min - ft / min	Rope Length m / ft
1	12600 kg / 27773 lbs	6 m/min - 19 ft/min	10.7m / 35ft
2	10717 kg / 23620 lbs	7 m/min - 22 ft/min	22.8m / 74.8ft
EN 3	9323 kg / 20548 lbs	8 m/min - 26 ft/min	37 m / 121 ft
4	8250 kg / 18183 lbs	9 m/min - 29 ft/min	53 m / 173 ft

Winch : (kg / lbs)

200 kg (441 lbs)

Roller Fairlead : (kg / lbs)

18 kg (40 lbs)

Cable Tensioner : (kg / lbs)

8 kg (18 lbs)

Hydraulic Inlets

G 1/2"

Mounting Bolts

16 pieces M16 8,8

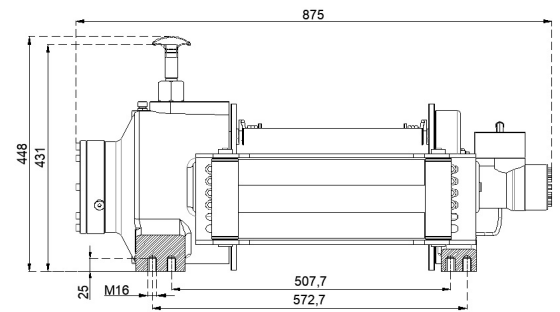
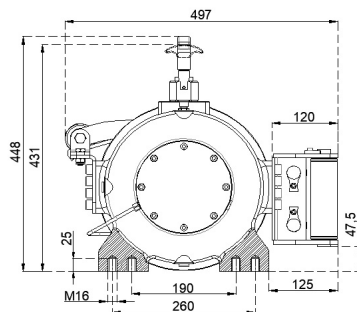
Standards

Cable tensioner
Roller Fairlead

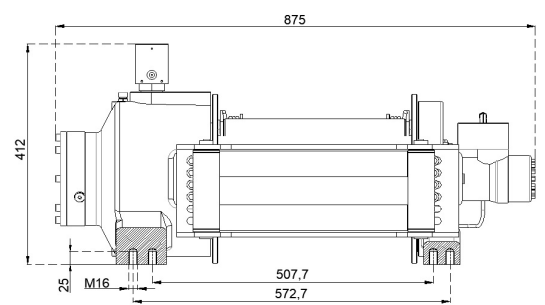
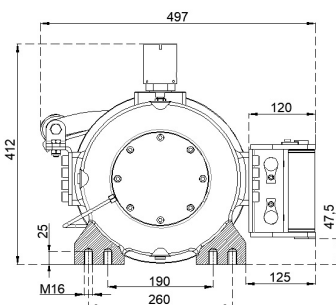
Optional

Air Clutch
IP67 - IP 68

Manual Clutch



Air Clutch



Warning !

- Before operating the winch, A-B lines must be open to T line (tank line) of the control valve in center position.
- This winch is designed and manufactured for pulling, don't lift person or material.
- Always keep last 5 wrap on the drum.
- The technical details given above are just for information.
- HAMMER WINCH keeps the right to change the technical details.
- Pneumatic working pressure: Min 9 bar - Max 12 bar (Min 130 - Max 174 psi)