

- Extra reinforced steel cast body through the heat treatment and industrial design
- Light and robust design
- 100% Holding negative-acting hydraulic brake system.
- Standard pressure roller and roller fairlead.
- Easy assembly, high rope capacity and high torque hydromotor
- Standard manual rope unloading system
- EN 14492-1 : 2006 Power Driven winches supported
- CE Machinery Directive 2006/42/EC

Specifications

Max.pulling capacity (kg / lbs)	: 14200 kg (31297 lbs)
Max.rope length (m/ ft)	: 53 m (173 ft)
Max.rope length EN (m / ft)	: 37 m (121 ft)
Recommended wire rope (mm / in)	: 18 mm (7/10") Compact 2160 Mpa
Hydromotor (cc / in³)	: 250 cc (15 in³)
Max. pump flow (L / min - gal / min)	: 60 L (15.8 gal)
Gear ratio:	: 28 : 1
Oil types and capacity	: 85W 90 - 2 L
Max. working pressure (bar / psi)	: 167 bar (2421 psi)

Rope Winding Layer	Pulling Capacity kg / lbs	Rope Speed m / min - ft / min	Rope Length m / ft
1	14200 kg / 31297 lbs	4m/min - 15 ft/min	10.7 m / 35 ft
2	12076 kg / 26617 lbs	5m/min - 17 ft/min	22.8 m / 74.8 ft
EN 3	10506 kg / 23155 lbs	6m/min - 20 ft/min	37 m / 121 ft
4	9297 kg / 20490 lbs	7m/min - 23 ft/min	53 m / 173 ft

Winch : (kg / lbs)

201 kg (443 lbs)

Roller Fairlead : (kg / lbs)

18 kg (40 lbs)

Cable Tensioner : (kg / lbs)

8 kg (18 lbs)

Mounting Bolts

16 pieces M16 8,8

Standards

Cable tensioner
Roller Fairlead

Optional

Air Clutch
IP67 - IP 68
Air cable tensioner

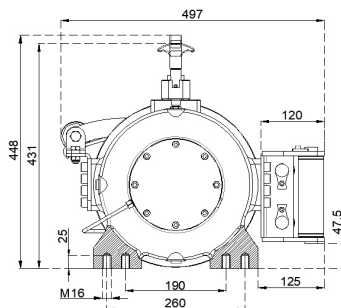
Hydraulic Inlets

G 1/2"

Warning !

- Before operating the winch, A-B lines must be open to T line (tank line) of the control valve in center position.
- This winch is designed and manufactured for pulling, don't lift person or material.
- Always keep last 5 wrap on the drum.
- The technical details given above are just for information.
- HAMMER WINCH keeps the right to change the technical details.
- Pneumatic working pressure: Min 9 bar - Max 12 bar (Min130 psi - Max 174 psi)

Manual Clutch



Air Clutch

