

- Extra reinforced steel cast body through the heat treatment and industrial design
- Light and robust design
- 100% Holding negative-acting hydraulic brake system.
- Standard pressure roller and roller fairlead.
- Easy assembly, high rope capacity and high torque hydromotor
- Standard manual rope unloading system
- CE Machinery Directive 2006/42/EC
- Meets SAE J706 rating

### Specifications

<b>Max.pulling capacity (kg / lbs)</b>	: 5000 kg (11022 lbs)
<b>Max.ropelength (m / ft)</b>	: 35.5 m ( 116 ft)
<b>Recommended wire rope (mm / in)</b>	: 12mm (1/2") 1960 Mpa
<b>Hydromotor (cc / in<sup>3</sup>) :</b>	: 315 cc (18,4 in <sup>3</sup> )
<b>Max. pump flow (L / min - g / min)</b>	: 60 L ( 15.8 g )
<b>Gear ratio:</b>	: 5,6 : 1
<b>Oil types and capacity</b>	: 85W 90 - 0,75 L
<b>Max. working pressure (bar / psi)</b>	: 135 bar ( 1958 psi)

#### Winch : ( kg / lbs )

60 kg (132 lbs)

#### Roller Fairlead : ( kg / lbs )

6 kg (13,22 lbs)

#### Cable Tensioner : ( kg / lbs )

2,5 kg (5,51 lbs)

#### Mounting Bolts

8 Adet M14 8,8

#### Standards

Cable tensioner  
Roller Fairlead  
Manual Clutch

#### Optional

Air Clutch  
IP67 - IP 68

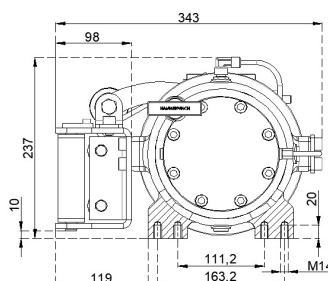
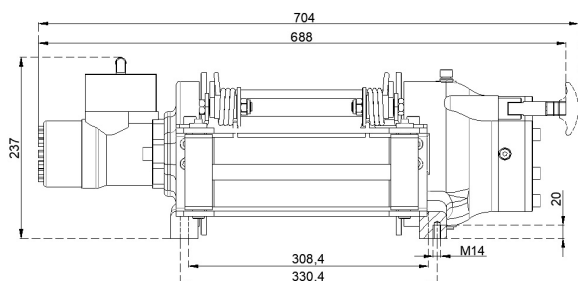
#### Hydraulic Inlets

G 1/2"

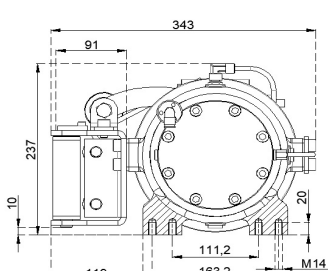
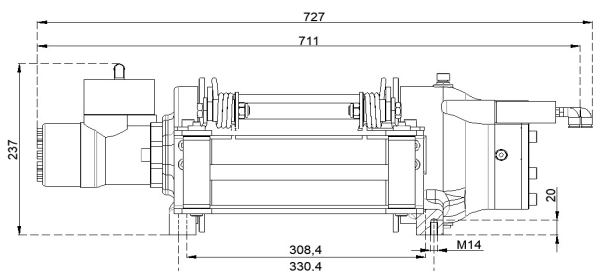
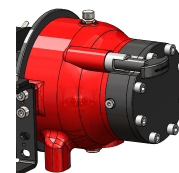
Rope Winding Layer	Pulling Capacity kg / lbs	Rope Speed m / min- ft / min	Rope Length m / ft
<b>1</b>	5000 kg / 11022 lbs	11 m/min - 36.6 ft/min	7.1 m / 23 ft
<b>2</b>	4203 kg / 9264 lbs	13.3 m/min - 43.5 ft/min	15.4 m / 50.5 ft
<b>3</b>	3625 kg / 7990 lbs	15.4 m/min - 50.5 ft/min	25 m / 82 ft
<b>4</b>	3187 kg / 7024 lbs	17.5 m/min - 57.4 ft/min	35.5 m / 116 ft

#### Warning !

- Before operating the winch, A-B lines must be open to T line (tank line) of the control valve in center position.
- This winch is designed and manufactured for pulling, don't lift person or material.
- Always keep last 5 wrap on the drum.
- The technical details given above are just for information.
- HAMMER WINCH keeps the right to change the technical details.
- Pneumatic Working Pressure: Min 9 bar - Max 12 bar (Min130 psi - Max174 psi)



Manual Clutch



Air Clutch

