

- Extra reinforced steel cast body through the heat treatment and industrial design
- Light and robust design.
- 100% Holding negative-acting hydraulic brake system.
- Standard pressure roller and roller fairlead.
- Easy assembly, high rope capacity and high torque hydromotor.
- Standard manual rope unloading system.
- EN 14492-1 : 2006 Power driven winches supported.
- CE Machinery Directive 2006/42/EC

Specifications

Max.pulling capacity (kg / lbs)	: 3550 kg (7824 lbs) lbs
Max.ropelength (m/ ft)	: 53.8 m (176.4 ft)
Max.ropelength for EN (m / ft)	: 40.6 m (133 ft)
Recommended wire rope (mm / in)	: 10 mm (3/8") 1960 Mpa
Hydromotor (cc / in ³)	: 250 cc (15 in ³)
Max. pump flow (L / min - g / min)	: 60 L/min (15.8 g/min)
Gear ratio	: 5,6 : 1
Oil types and capacity	: 85W 90 - 0,75 L
Max. working pressure (bar / psi)	: 125 bar (1812 psi)

Rope Winding Layer	Pulling Capacity kg / lbs	Rope Speed m / min- ft / min	Rope Length m / ft
1	3550 kg / 7824 lbs	14 m/min - 46 ft/min	8.35 m / 27.4 ft
2	3061 kg / 6747 lbs	16 m/min - 53 ft/min	17.75 m / 58.2 ft
3	2691 kg / 5931 lbs	19 m/min - 62 ft/min	28.3 m / 92.8 ft
EN 4	2400 kg / 5291 lbs	21 m/min - 69 ft/min	40.6 m / 133 ft
5	2166 kg / 4775 lbs	23 m/min - 76 ft/min	53.8 m / 176.4 ft

Winch : (kg / lbs)

59,5 kg (130,9 lbs)

Roller Fairlead : (kg / lbs)

6 kg (13,22 lbs)

Cable Tensioner : (kg / lbs)

2,5 kg (5,51 lbs)

Mounting Bolts

8 pieces M14 8,8

Standards

Cable tensioner
Roller Fairlead
Manual Clutch

Optional

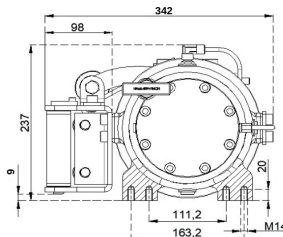
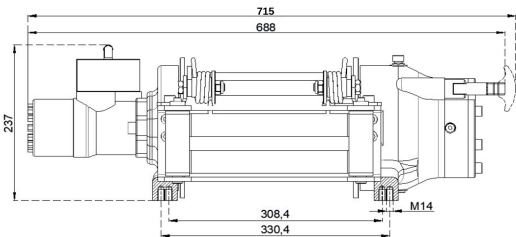
Air Clutch
IP67 - IP 68

Hydraulic Inlets

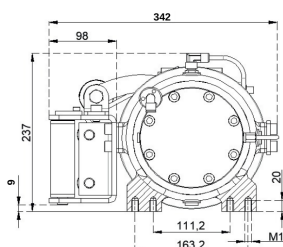
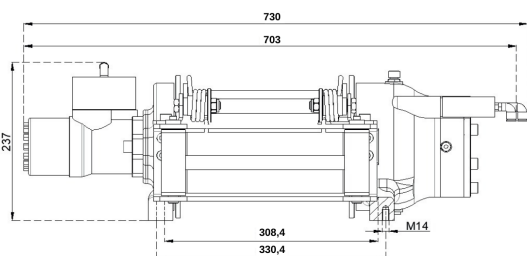
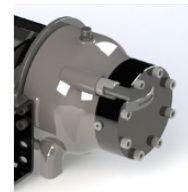
G 1/2"

Warning !

- Before operating the winch, A-B lines must be open to T line (tank line) of the control valve in center position.
- This winch is designed and manufactured for pulling, don't lift person or material.
- Always keep last 5 wrap on the drum.
- The technical details given above are just for information.
- HAMMER WINCH keeps the right to change the technical details.
- Pneumatic working pressure: Min 9bar - Max 12 bar (Min 130 psi - Max 174 psi)



Manual Clutch



Air Clutch

