

- Extra reinforced steel cast body.
- Lightweight and strong design, high rope capacity.
- Negative-acting hydraulic brake holding reinforced.
- Dynamics, strong hydraulic motor and high strength cast drum.
- EN 14492-1 : 2006 Power driven winches supported.
- CE Machinery Directive 2006/42/EC

## Specifications

<b>Max.pulling capacity (kg / lbs)</b>	: 10000 kg ( 22040 lbs )
<b>Max.rope length (m / ft)</b>	: 58.3 m ( 191 ft )
<b>Max.rope length for EN (m / ft)</b>	: 41.2 m ( 135 ft )
<b>Recommended wire rope (mm / in)</b>	: 16 mm ( 7/11" ) 2160 Mpa
<b>Hydromotor (cc / in<sup>3</sup>)</b>	: 160 cc ( 9.6 in <sup>3</sup> )
<b>Max. pump flow (L / min - g / min)</b>	: 60 L/min ( 15.8 g/min )
<b>Gear ratio</b>	: 28 : 1
<b>Oil types and capacity</b>	: 85W 90 - 2L
<b>Max. working pressure (bar / psi)</b>	: 175 bar ( 2537 psi )

Rope Winding Layer	Pulling Capacity kg / lbs	Rope Speed m / min - ft / min	Rope Length m / ft
<b>1</b>	10000 kg / 22040 lbs	7 m/min - 23 ft/min	12 m / 39 ft
<b>2</b>	8632 kg / 19026 lbs	8 m/min - 27 ft/min	25.4 m / 83.3 ft
<b>EN 3</b>	7594 kg / 16738 lbs	9 m/min - 30 ft/min	41.2 m / 135 ft
<b>4</b>	6779 kg / 14942 lbs	10 m/min - 34 ft/min	58.3 m / 191 ft

### Winch : (kg / lbs )

197 kg (434 lbs)

### Roller Fairlead : ( kg / lbs )

18 kg (39,6 lbs)

### Cable Tensioner ( kg / lbs )

8 kg (17,6 lbs)

### Mounting Bolts

16 pieces M16 8,8

### Standards

Cable tensioner  
Roller Fairlead

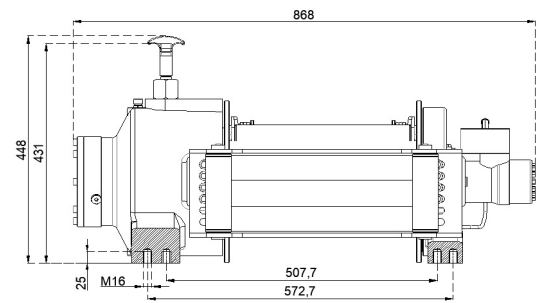
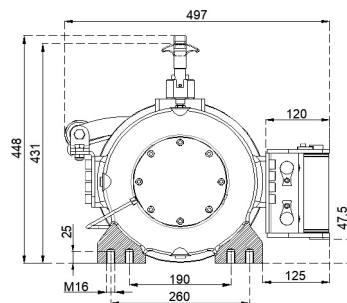
### Hydraulic Inlets

G 1/2"

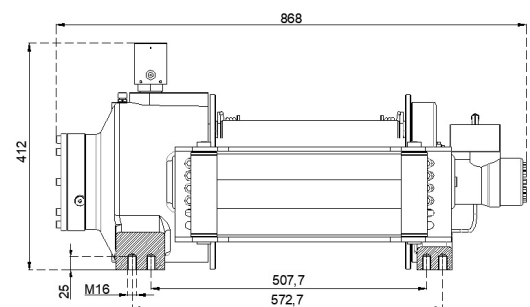
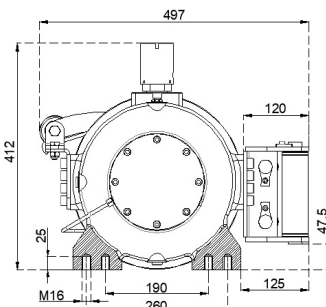
### Optional

Air Clutch  
IP67 - IP 68  
Pneumatic Cable Tensioner

## Manual Clutch



## Air Clutch



### Warning !

- Before operating the winch, A-B lines must be open to T line (tank line) of the control valve in center position.
- This winch is designed and manufactured for pulling, don't lift person or material.
- Always keep last 5 wrap on the drum.
- The technical details given above are just for information.
- HAMMER WINCH keeps the right to change the technical details.
- Pneumatic working pressure: Min 9 bar - Max 12 bar (Min 130 psi - Max 174 psi)