

- Extra reinforced aluminium cast body through the heat treatment and industrial design
- Light and robust design
- 100% Holding negative-acting hydraulic brake system.
- Standard pressure roller and roller fairlead.
- Easy assembly, high rope capacity and high torque hydromotor
- Standard manual rope unloading system
- EN 14492-1 : 2006 Power Driven winches supported
- CE Machinery Directive 2006/42/EC

Specifications

Max.pulling capacity (kg / lbs)	: 4300 kg (9477 lbs)
Max.ropelength (m / ft)	: 48 m (157 ft)
Max.ropelength for EN (m / ft)	: 36 m (118 ft)
Recommended wire rope (mm / in)	: 11 mm (4/9") 1960 Mpa
Hydraulic Motor (cc / in³)	: 315 cc (19 in³)
Max. pump flow (L / min - g / min)	: 60 L/min (15.8 g/min)
Gear ratio	: 5,6 : 1
Oil types and capacity	: 85W 90 - 0,75 L
Max. working pressure (bar / psi)	: 120 bar (1740 psi)

Rope Winding Layer	Pulling Capacity kg / lbs	Rope Speed m / min - ft / min	Rope Length m / ft
1	4300 kg / 9477 lbs	11m/min - 36ft/min	7m / 23 ft
2	3657 kg / 8060 lbs	13m/min - 42ft/min	16 m / 52 ft
3	3181 kg / 7010 lbs	15m/min - 49ft/min	25 m / 82 ft
EN 4	2815 kg / 6204 lbs	17m/min - 55ft/min	36 m / 118 ft
5	2524 kg / 5564 lbs	19 m/min - 62ft/min	48 m / 157 ft

Winch : (kg / lbs)

54 kg (119 lbs)

Roller Fairlead : (kg / lbs)

6 kg (13,22 lbs)

Cable Tensioner : (kg / lbs)

2,5 kg (5,51 lbs)

Mounting Bolts

8 pieces M14 8,8

Standards

Cable tensioner
Roller Fairlead
Manual Clutch

Optional

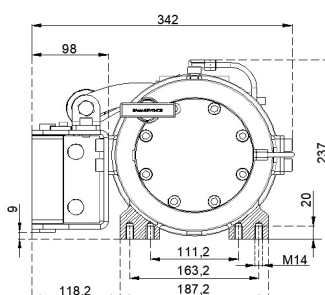
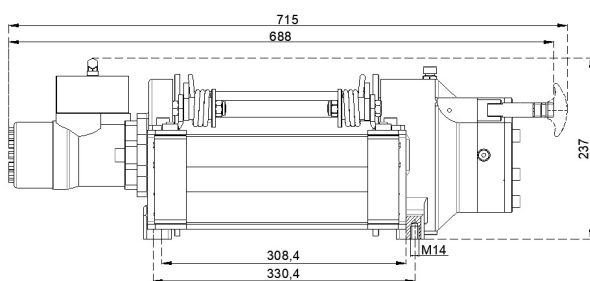
Air Clutch
IP67 - IP 68

Hydraulic Inlets

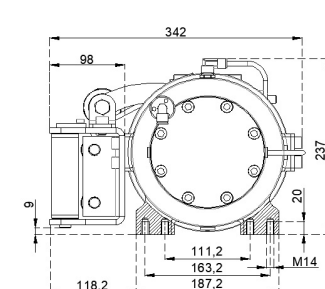
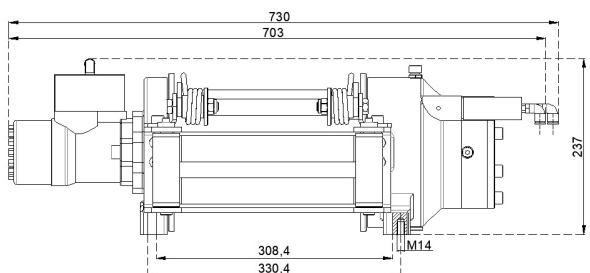
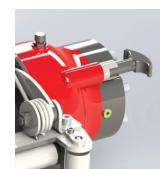
G 1/2"

Warning !

- Before operating the winch, A-B lines must be open to T line (tank line) of the control valve in center position.
- This winch is designed and manufactured for pulling, don't lift person or material.
- Always keep last 5 wrap on the drum.
- The technical details given above are just for information.
- HAMMER WINCH keeps the right to change the technical details.
- Pneumatic working pressure: Min 9bar - Max 12 bar (Min 130 psi - Max 174 psi)



Manual



Air Clutch

