



- Extra reinforced aluminium cast body through the heat treatment and industrial design
- Light and robust design
- 100% Holding negative-acting hydraulic brake system.
- Standard pressure roller and roller fairlead.
- Easy assembly, high rope capacity and high torque hydromotor.
- Standard manual rope unloading system.
- EN 14492-1 : 2006 Power driven winches supported
- CE Machinery Directive 2006/42/EC

## Specifications

<b>Max.pulling capacity (kg / lbs)</b>	: 5600 kg ( 12342 lbs )
<b>Max.ropelength (m / ft)</b>	: 48.6 m ( 159.4 ft )
<b>Max.ropelength for for EN (m/ ft)</b>	: 36 m ( 118 ft )
<b>Recommended wire rope (mm / in)</b>	: 12 mm ( 1/2" ) 2160 Mpa
<b>Hydromotor (cc / in³)</b>	: 400 cc ( 24 in³ )
<b>Max. pump flow (L / min - g / min)</b>	: 60 L ( 15.8 g )
<b>Gear ratio</b>	: 5,2 : 1
<b>Oil types and capacity</b>	: 85W 90 - 0,9 L
<b>Max. working pressure (bar / psi)</b>	: 155 bar (2247 psi)

Rope Winding Layer	Pulling Capacity kg / lbs	Rope Speed m / min- ft / min	Rope Length m / ft
1	5600 kg / 12342 lbs	10 m/min - 33 ft/min	7.35 m / 24.1 ft
2	4758 kg / 10486 lbs	12 m/min - 39 ft/min	15.7 m / 51.5 ft
3	4136 kg / 9116 lbs	14 m/min - 46 ft/min	25.3 m / 83 ft
EN 4	3657 kg / 8062 lbs	16 m/min - 52 ft/min	36 m / 118 ft
5	3278 kg / 7226 lbs	17 m/min - 58 ft/min	48.6 m / 159.4 ft

## Winch : (kg / lbs )

78.5 kg (173 lbs)

## Roller Fairlead : ( kg / lbs )

9 kg ( lbs)

## Cable Tensioner :( kg / lbs )

4 kg (9 lbs)

## Mounting Bolts

16 pieces M12

## Standards

Cable tensioner  
Roller Fairlead  
Manual Clutch

## Optional

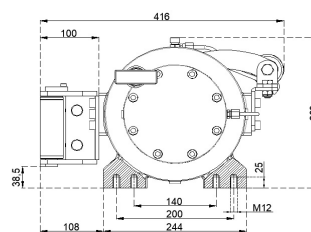
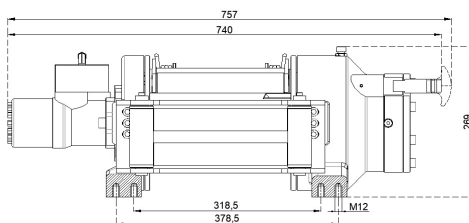
Air Clutch  
IP67 - IP 68

## Hydraulic Inlets

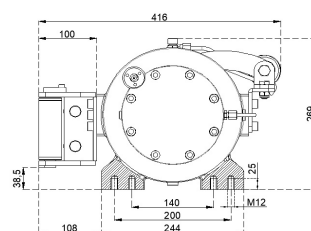
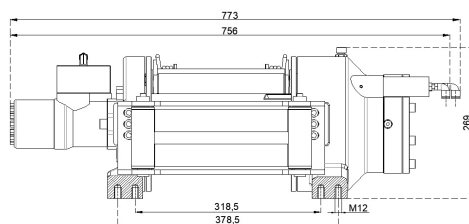
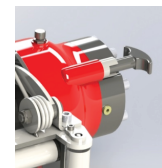
G 1/2"

## Warning !

- Before operating the winch, A-B lines must be open to T line (tank line) of the control valve in center position.
- This winch is designed and manufactured for pulling, don't lift person or material.
- Always keep last 5 wrap on the drum.
- The technical details given above are just for information.
- HAMMER WINCH keeps the right to change the technical details.
- Pneumatic working pressure: Min 9 bar - Max 12 bar (Min 130 psi - Max 174 psi)



Manual Clutch



Air Clutch

