

- Extra reinforced aluminium cast body through the heat treatment and industrial design
- Light and robust design.
- 100% Holding negative-acting hydraulic brake system.
- Standard pressure roller and roller fairlead.
- Easy assembly, high rope capacity and high torque hydromotor.
- Standard manual rope unloading system.
- EN 14492-1 : 2006 Power Driven winches supported
- CE Machinery Directive 2006/42/EC

## Specifications

<b>Max.pulling capacity (kg / lbs)</b>	: 6600 kg ( 14546 lbs )
<b>Max.ropelength (m / ft)</b>	: 43 m ( 141 ft )
<b>Max.ropelength EN (m / ft)</b>	: 30 m ( 98.4 ft )
<b>Recommended wire rope (mm / in)</b>	: 14 mm ( 5/9" ) 1960 Mpa
<b>HydroMotor (cc / in³)</b>	: 400 cc ( 24 in³ )
<b>Max. pump flow (L / min - gal / min)</b>	: 75 L/min ( 19.8 g/min )
<b>Gear ratio</b>	: 5,2 : 1
<b>Oil types and capacity</b>	: 85W 90 - 0,9 L
<b>Max. working pressure (bar / psi)</b>	: 190 bar (2755 psi)

Rope Winding Layer	Pulling Capacity kg / lbs	Rope Speed m / min- ft / min	Rope Length m / ft
<b>1</b>	6600 kg / 14546 lbs	15 m/min - 50 ft/min	8.8 m / 28.8 ft
<b>2</b>	5610 kg / 12365 lbs	18 m/min - 58 ft/min	18 m / 59 ft
<b>EN 3</b>	4878 kg / 10751 lbs	20 m/min - 65 ft/min	30 m / 98.4 ft
<b>4</b>	4315 kg / 9511 lbs	23 m/min - 75 ft/min	43 m / 141 ft

### Winch : ( kg / lbs )

88.5 kg (195 lbs)

### Roller Fairlead : ( kg / lbs )

11 kg (24,2 lbs)

### Cable Tensioner : ( kg / lbs )

4,5 kg (9,9 lbs)

### Mounting Bolts

16 pieces M12

### Standards

Cable tensioner  
Roller Fairlead

### Optional

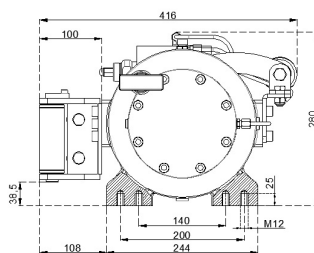
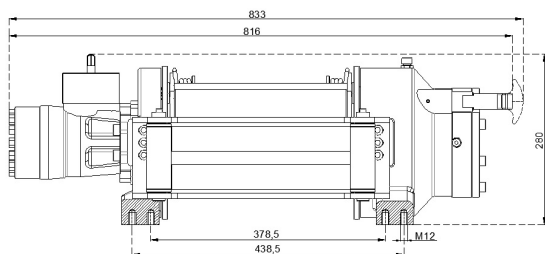
Air Clutch  
IP67 - IP 68

### Hydraulic Inlets

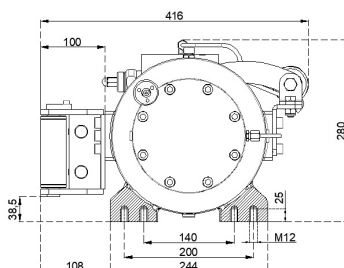
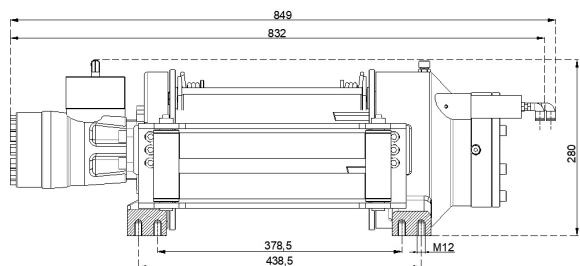
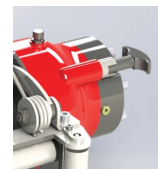
G 1/2"

### Warning !

- Before operating the winch, A-B lines must be open to T line (tank line) of the control valve in center position.
- This winch is designed and manufactured for pulling, don't lift person or material.
- Always keep last 5 wrap on the drum.
- The technical details given above are just for information.
- HAMMER WINCH keeps the right to change the technical details.
- Pneumatic working pressure: Min 9 - Max 12 bar (Min 130 psi - Max 174 psi)



Manual Clutch



Air Clutch

