

- Extra reinforced aluminium cast body through the heat treatment and industrial design
- Light and powerful design
- %100 Holding Negative-Acting Hydraulic brake system.
- Standard Pressure Roller and Roller Failead.
- Easy assembly, High rope capacity and High torque hydromotor
- Standard manual rope unloading system
- EN 14492-1 : 2006 Power Driven winches supported
- CE Machineri Directive 2006/42/EC

Specifications

Max.pulling capacity (kg / lbs)	: 7600 kg (16750 lbs)
Max.rope length (m / ft)	: 43 m (141 ft)
Max.rope length EN (m / ft)	: 30 m (98.4 ft)
Recommended wire rope (mm / in)	: 14 mm (5/9") 2160 Mpa
Hydraulic Motor (cc / in³)	: 400 cc (24 in³)
Max. pump flow (L / min - gal / min)	: 75 L/min (19.8 g/min)
Gear ratio	: 5,2 : 1
Oil types and capacity	: 85W 90 - 0,9 L
Max. working pressure (bar / psi)	: 200 bar (2900 psi)

Winch : (kg / lbs)

90 kg (198.3 lbs)

Roller Fairlead : (kg / lbs)

11 kg (24 lbs)

Cable Tensioner : (kg / lbs)

4.5 kg (10 lbs)

Mounting Bolts

16 pieces M12

Standards

Cable tensioner
Roller Fairlead

Optional

Air Clutch
IP67 - IP 68

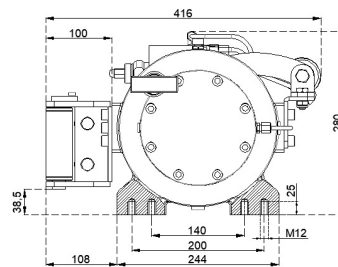
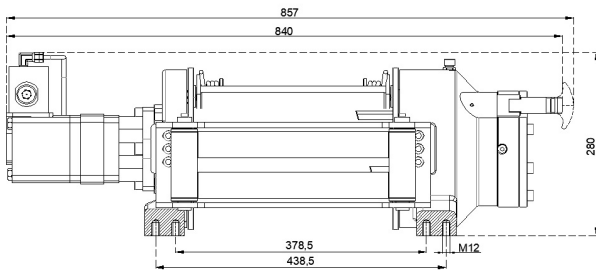
Hydraulic Inlets

G 3/4"

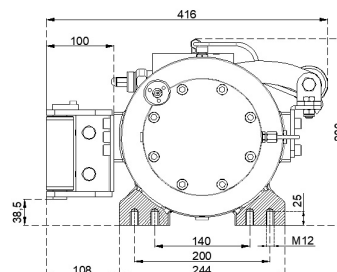
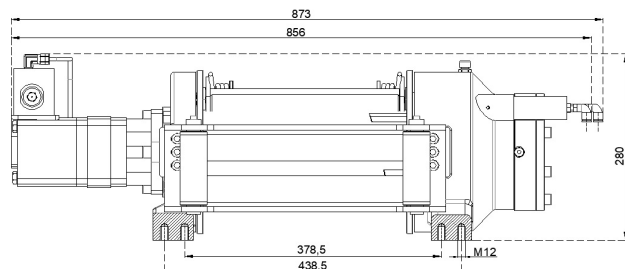
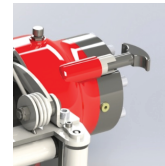
Rope Winding Layer	Pulling Capacity kg / lbs	Rope Speed m / min - ft / min	Rope Length m / ft
1	7600 kg / 16750 lbs	15 m/min - 49 ft/min	8.8 m / 28.8 ft
2	6459 kg / 14237 lbs	17 m/min - 58 ft/min	18 m / 59 ft
EN 3	5616 kg / 12380 lbs	20 m/min - 67 ft/min	30 m / 98.4 ft
4	4968 kg / 10951 lbs	23 m/min - 75 ft/min	43 m / 141 ft

Warning !

- Before operating the winch, A-B lines must be open to T line (tank line) of the control valve in center position.
- This winch is designed and manufactured for pulling, don't lift person or material.
- Always keep last 5 wrap on the drum.
- The technical details given above are just for information.
- HAMMER WINCH keeps the right to change the technical details.
- Pneumatic working pressure: Min 9 bar - Max 12 bar (Min 130 psi - 174 psi)



Manual Clutch



Air Clutch

